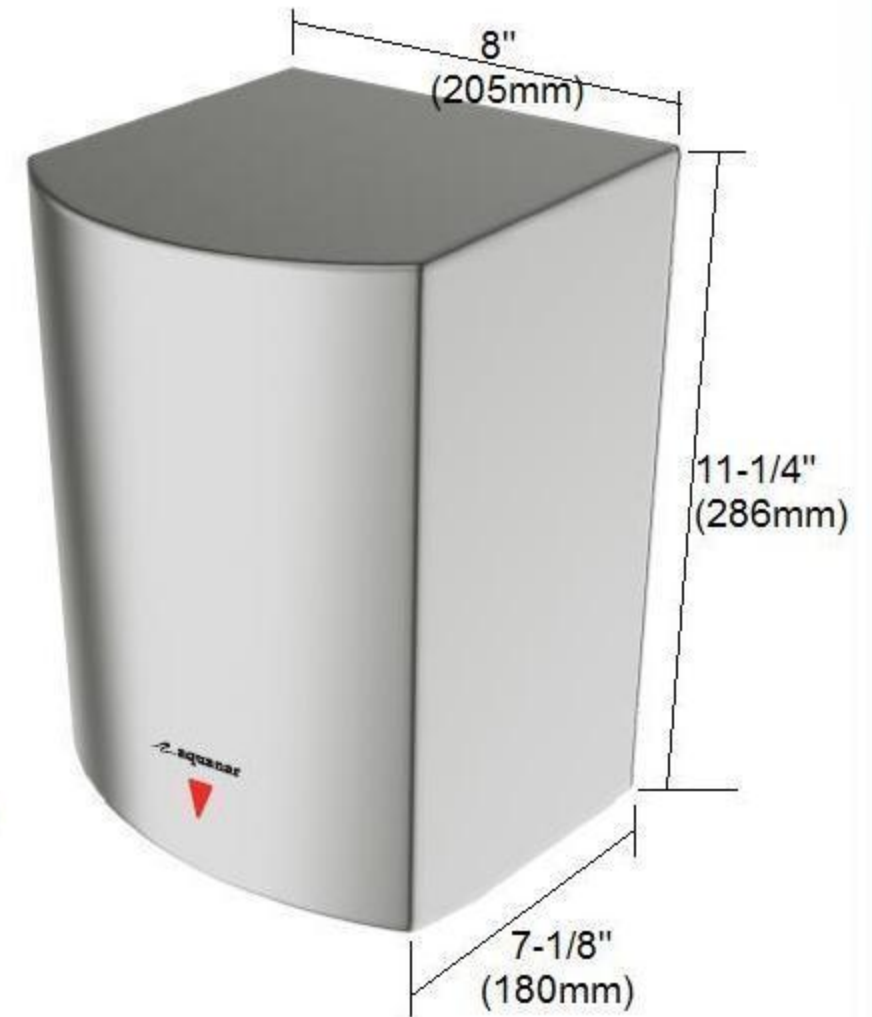


AQN 80.060

Séchoir à mains, Haute vitesse

- Boîtier en acier inoxydable brossé
- Puissance d'opération: 1600W
- Niveau sonore: 77 dB à 1 m
- Lumière LED facilitant l'utilisation
- Temps de séchage 10-15 secondes
- Dimensions: largeur 205mm X hauteur 286mm X profondeur 180mm
- Poids: 5.8 Kg



SPÉCIFICATIONS TECHNIQUES

- Voltage 110-120 Vac, 50-60 Hz, 1,3-1,6 Kw
- Contrôle électronique à l'infra rouge avec auto-ajustement
- Distance de détection 51mm à 330mm

OPTIONS

- 80.060 110-120Vac
- 80.060-02 208Vac
- 80.060-03 220Vac

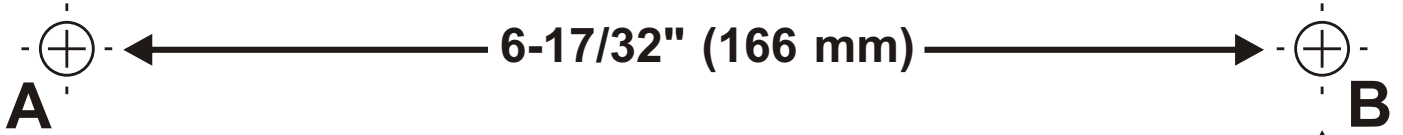


LEED Credits

Minimum Energy Performance: Design & Construction
EA Prerequisite 2

Optimize Energy Performance: Design & Construction
EA Credit 1

80.060 Hand Dryer



DRYER MOUNTING TEMPLATE

Fix this card to the wall.

Drill 4 holes

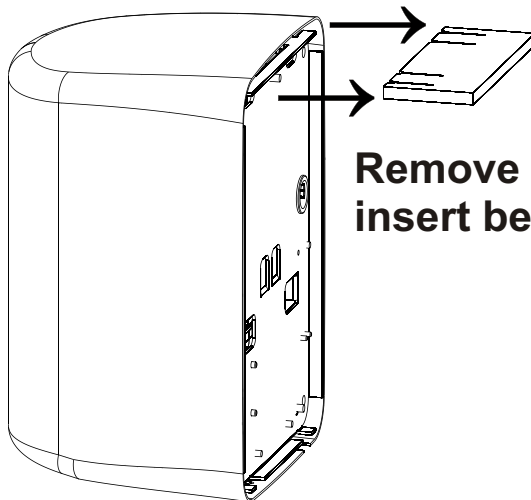
(A. B. C. D. 5/16" (8 mm) diameter: 1-3/8" (35 mm) depth.)

Electrical Connection

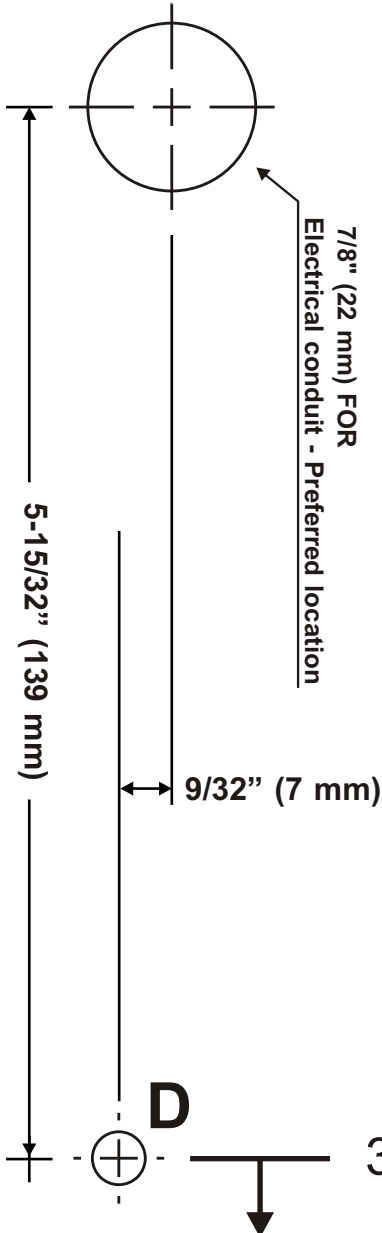
1. Secure the base plate on the wall.
2. Use only 1/2 inch trade conduit.
3. Connections:
 - A. Connect the black live wire to the terminal block marked "L".
 - B. Connect the white neutral wire to the terminal block marked "N".
 - C. Connect the green and yellow (or green, note bare earth wires should be sleeved with green and yellow or green sleeving) earth wire colored to the ground washer marked with the earth symbol. ⊕

Mounting heights from bottom of dryer

Men's	43"	(109cm)
Ladies	41"	(104cm)
Children, ages 11-17	39"	(99cm)
Children, ages 3-10	33"	(84cm)
Handicapped	35"	(89cm)



Remove cardboard insert before installation



39" (100 cm) from floor.
(See mounting chart above.)

9-9/64" (232 mm)