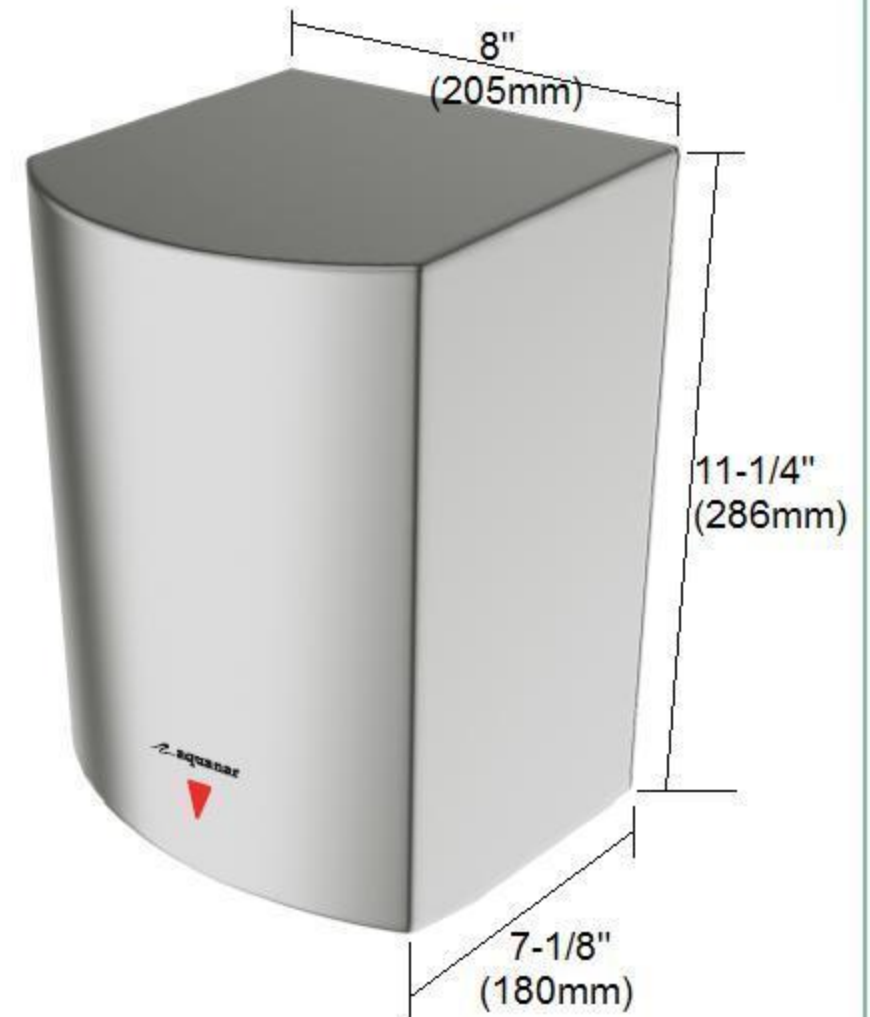


# AQN 80.060

## Hand Dryer, High Speed

- Material : Stainless Steel
- Operation Power : 1600 W
- Housing: Stainless Steel Cover
- High Brightness LED to Increase the Ease and Delight of Use
- Operation Power : 1600 W (Adjustable)
- Drying Time: Less than 10-15 seconds
- Drip Proof: IP X1; Isolation: Class 1
- Motor Type: Brush Type, Dual Ball Bearings
- 350-700W, 12000-18000 R.P.M. Adjustable
- Warm Air Speed Output: 75-100 m/s (169-225 mi/hr), Adjustable
- Heater Element: 450-900W, Adjustable
- N.W.: 5.8 kg (12.8 lbs); G.W.: 6.6ks (14.6 lbs)
- Unit Size: 205mmW x 287mm H x 180mm D  
8"(W) x 11-1/4"(H) x 7-1/8"(D)



### TECHNICAL SPECIFICATIONS

- Operating Voltage : 110-120 Vac, 50/60Hz, 1.3-1.6 KW  
: 220-240 Vac, 50/60Hz, 1.3-1.6 KW
- Circuit Operation: Infrared Automatic, self adjusting
- Sensor Range: 51 mm to 330 mm [2" to 13"], adjustable
- Sound Level: 77 dB at 1 m
- Motor Thermal Protection: Auto Resetting Thermostat turns unit off at 105 degree C {221 degree F}
- Motor Overload Protection: Motor Assembly Designed with over current fuse, replaceable
- Heater Thermal Protection- Auto Resetting Thermostat turns unit off at 85 degree C (185 degree F); Thermal cut-off 142 degree C (288 degree F)

### MODELS

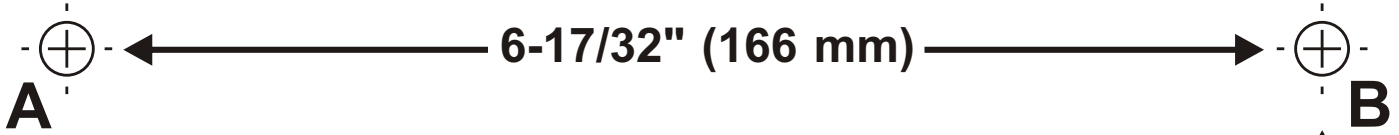
80.060	110-120Vac
80.060-02	208Vac
80.060-03	220Vac



#### LEED Credits

**Minimum Energy Performance: Design & Construction**  
EA Prerequisite 2  
**Optimize Energy Performance: Design & Construction**  
EA Credit 1

# 80.060 Hand Dryer



## DRYER MOUNTING TEMPLATE

**Fix this card to the wall.**

Drill 4 holes

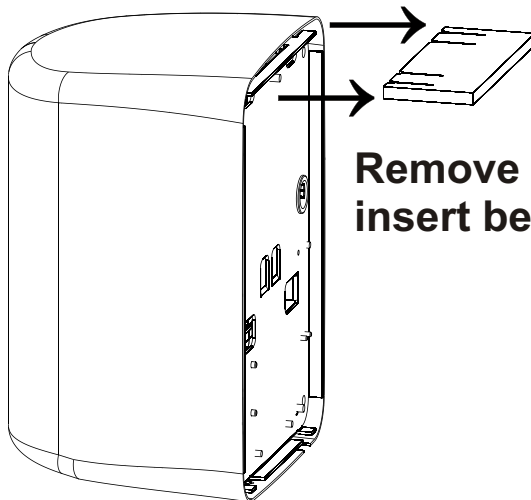
(A. B. C. D. 5/16" (8 mm) diameter: 1-3/8" (35 mm) depth.)

### Electrical Connection

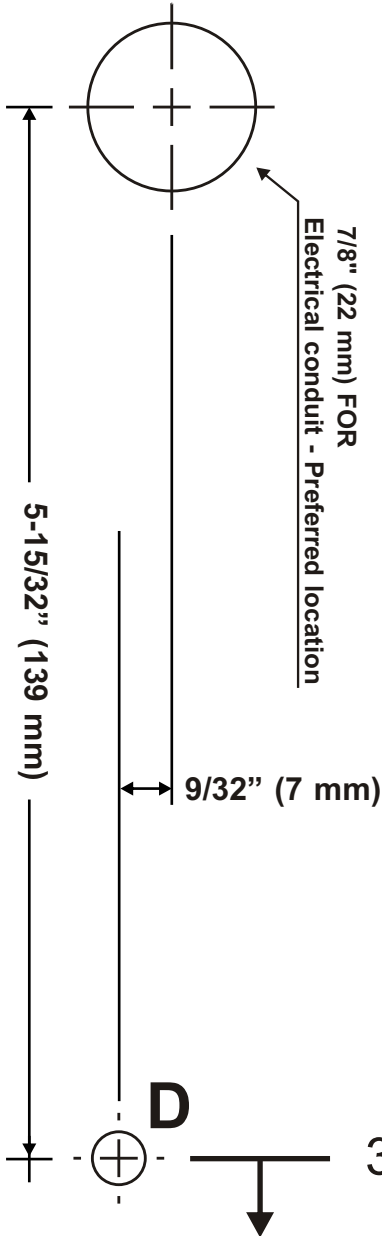
1. Secure the base plate on the wall.
2. Use only 1/2 inch trade conduit.
3. Connections:
  - A. Connect the black live wire to the terminal block marked "L".
  - B. Connect the white neutral wire to the terminal block marked "N".
  - C. Connect the green and yellow (or green, note bare earth wires should be sleeved with green and yellow or green sleeving) earth wire colored to the ground washer marked with the earth symbol. ⊕

#### Mounting heights from bottom of dryer

Men's	43"	(109cm)
Ladies	41"	(104cm)
Children, ages 11-17	39"	( 99cm)
Children, ages 3-10	33"	( 84cm)
Handicapped	35"	( 89cm)



**Remove cardboard insert before installation**



39" (100 cm) from floor.  
(See mounting chart above.)

9-9/64" (232 mm)

